

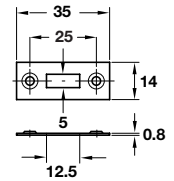
A Extending rod lock case

- With aperture for 7 mm square spindle
- Backset: 17 mm
- Left or right handed
- Double-locking action
- Steel



Finish	Left hand	Right hand
Polished nickel-plated	223.62.652	223.62.607

Order qty: 1 pc



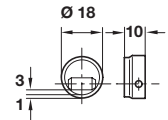
D Striking plate

- For recess mounting
- Steel



Finish	Cat. No.
Polished nickel-plated	239.62.700

Order qty: Multiples of 10 pcs



E Base catch with roller

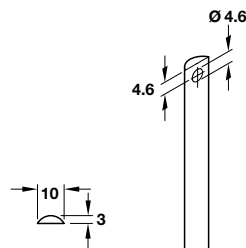
- For press-fit mounting
- Plastic

Colour	Cat. No.
White	239.60.750

Order qty: Multiples of 10 pcs

5

Locks



B Profile rod

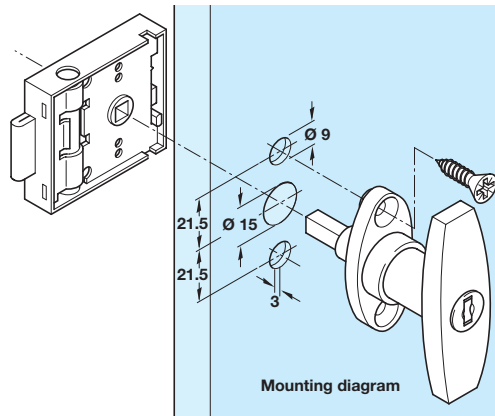
- Zinc-plated steel, solid profile

For approx. 2000 mm high doors	Cat. No.
1 pair = 2x 975 mm lengths	239.81.930

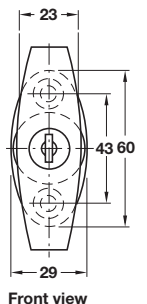
Order qty: 1 pair (order 1 pair per door)

For approx. 2500 mm high doors	Cat. No.
1 pair = 1x 975 mm, 1x 1475 mm length	239.81.950

Order qty: 1 pair (order 1 pair per door)



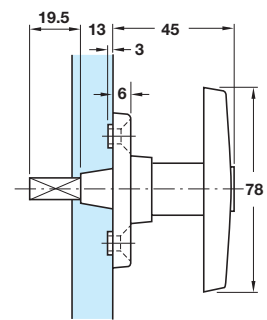
Mounting diagram



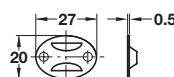
Front view



Rotary handle shown on page 137



Side view



C Rod guide

- For 10 x 3 mm profile rods
- Screw mounted
- Steel



Finish	Cat. No.
Polished nickel-plated	239.68.014

Order qty: Multiples of 10 pcs

F Lock handle with cylinder

- With 7 mm square spindle, suitable for use with **Piccolo-Nova** or **Extending Rod lock** cases with 7 mm square aperture
- 6 plate levers = 200 possible key changes
- Zinc alloy case
- Zinc alloy cylinder
- **Accessories:** 2x keys



Finish	Cat. No.
Polished chrome-plated	227.12.410

Order qty: 1 pc

TCH-FF 2010, HUK. Dimensional data not binding. We reserve the right to alter specifications without notice.